

POSITIVE PARENTING

for

AUTISM:

DISCIPLINE WITHOUT MELTDOWNS



Dr. Harshvardhan Singh



*Positive Parenting for
Autism: Discipline Without
Meltdowns*

**First Edition / Digital Edition
[October 2025]**

Mandatory Disclosures

Disclaimer / Purpose of Publication: This book is intended as a **parental guidance and educational resource** offering compassionate strategies for managing behavior, reducing meltdowns, and promoting emotional regulation in children on the autism spectrum. It is written to **empower parents with understanding and positive discipline tools**, not to provide medical, psychiatric, or therapeutic prescriptions. Always consult a **qualified child psychologist, behavioral therapist, or developmental pediatrician** before implementing any intervention or behavior-modification technique.

No Psychological or Medical Claims: This publication does **not diagnose, treat, or cure** autism or any associated conditions. The examples, case studies, and suggested frameworks are **illustrative** and should not be interpreted as universally effective or clinically endorsed solutions. The author(s) and publisher make **no guarantees of behavioral change or therapeutic success**.

Professional Supervision Recommended: All behavioral and emotional interventions should be practiced **under appropriate professional guidance**. If your child exhibits self-injurious, aggressive, or distressing behaviors, seek immediate consultation from a licensed therapist or physician.

Evidence and Accuracy: The book references established approaches from **Positive Behavior Support (PBS), Applied Behavior Analysis (ABA)** principles, **Mindful Parenting**, and **Cognitive-Behavioral frameworks**. However, **research and guidelines evolve continuously**, and the publisher does not claim that the strategies are exhaustive or universally endorsed.

Liability Statement: Neither the author(s), editor(s), nor publisher shall be liable for **any loss, injury, or damages—direct or indirect—resulting from the application or misuse** of the content. Parental discretion and professional collaboration are essential in adapting these tools to each child’s unique needs and temperament.

Ethical Commitment: This book promotes a **neurodiversity-affirming, non-punitive approach** to discipline—focusing on empathy, structure, and communication. Readers are encouraged to apply principles with respect to the child’s dignity, developmental level, and emotional safety.

Cultural Adaptation: The examples and case scenarios primarily reflect **family structures and support systems in the United States and Europe**. Readers from other regions are advised to modify approaches based on their local cultural norms, educational systems, and access to resources.

Copyright Notice:

© [2025] by [BOOKSKART WORLD]. All rights reserved. No part of this publication may be reproduced, distributed, or transmitted in any form or by any means, including photocopying, recording, or other electronic or mechanical methods, without the prior written permission of the publisher, except in the case of brief quotations in critical reviews and certain other non-commercial uses permitted by copyright law.

ISBN / Edition / Imprint:

- ISBN: [978-81-994064-1-4]
- Authored By PsyForU Editorial Collective
- Series Editor: Dr. Leah, Managing Editor: Dr. Jonathan Reed, Associate Editor: Dr. Emily Bennett
- First Edition / Digital Edition – [October 2025]
- Published by [PSYFORU / BOOKSKART WORLD]

Contact and Support: For rights, permissions, bulk orders, or academic usage inquiries, contact:  [info@psyforu.com] |  [https://psyforu.com]

ISBN: [978-81-994064-1-4]



Description:

Traditional discipline methods often don't work for children with autism — and can even make meltdowns worse. What parents need are compassionate, effective strategies that set boundaries without creating fear or frustration.

This practical guide shows you how to manage behavior with positive parenting techniques that truly work for autistic children, while reducing stress for the whole family.

Inside this book, you'll discover:

- ✓ The difference between meltdowns and tantrums — and how to prevent both**
- ✓ How to identify triggers and reduce behavior challenges before they start**
- ✓ Gentle discipline methods that replace punishment with teaching**
- ✓ Emotional regulation tools that help children calm themselves**
- ✓ Positive reinforcement strategies that build confidence and motivation**
- ✓ Practical tips for handling behavior challenges in public places**
- ✓ Stress-reducing tools for parents to stay calm during tough moments**

Written with warmth and clarity, this book empowers parents to guide behavior in a way that builds trust, cooperation, and respect.

👉 Download today and learn how to discipline with compassion, not conflict.

Index

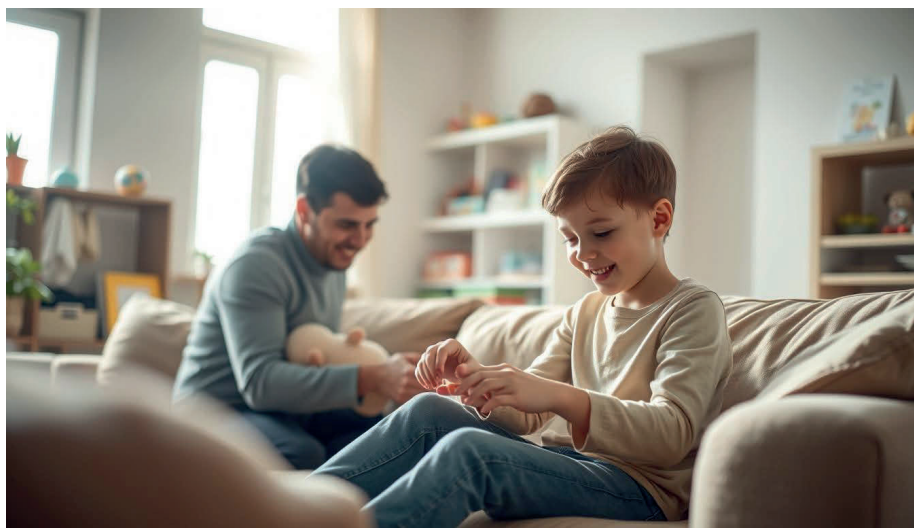
Chapter	Chapter Name	Page No.
Chapter 1	Rethinking Discipline for Autism	01-45
Chapter 2	Understanding Meltdowns vs. Tantrums	46-97
Chapter 3	Identifying Triggers	98-140
Chapter 4	Building Emotional Regulation Skills	141-195
Chapter 5	Positive Reinforcement Techniques	196-245
Chapter 6	Setting Boundaries Kindly	246-279
Chapter 7	Gentle Discipline in Action	280-323
Chapter 8	Handling Public Situations	324-366
Chapter 9	Managing Parental Stress	367-381
Chapter 10	Creating a Calm Home	382-431

Chapter 1

Rethinking Discipline for Autism

Are behavioral challenges in autistic children attempts at communication? This question challenges conventional disciplinary wisdom. It invites us to reconsider our approach entirely.

Educational settings reveal a troubling pattern. Students with disabilities receive more suspensions than their representation in schools. These stats expose a disconnect between traditional discipline and autistic children's needs.



Traditional behavior techniques often backfire with autistic children. What looks like misbehavior is often sensory overwhelm or communication barriers. These aren't acts of willful opposition.

We need a paradigm shift in autism parenting. Effective techniques require abandoning punitive methods. Instead, we should use compassionate, connection-based strategies.

Discipline Without Meltdowns

This approach honors neurological differences. It creates environments where autistic children can thrive authentically. The goal is growth, not mere compliance.

Key Takeaways

- Autistic students face disproportionate disciplinary actions, receiving suspensions at rates significantly higher than their representation in schools
- Traditional discipline methods designed for neurotypical children systematically fail when applied to autistic neurology
- Behaviors labeled as defiance often represent communication attempts, sensory dysregulation, or executive function challenges
- Punitive approaches frequently damage parent-child relationships and exacerbate behavioral difficulties
- Effective strategies require understanding neurological differences rather than enforcing compliance-based expectations
- A compassionate, connection-focused framework yields better outcomes for autistic children's development and well-being

Understanding Why Your Current Approach Isn't Working

Standard behavioral approaches often fail with autistic children. This causes frustration for caregivers who've used these methods before. The problem isn't bad parenting or disobedience. It's a mismatch between traditional discipline and neurodivergent thinking.

Recognizing this mismatch is a chance to align with your child's brain. *Gentle parenting approaches for autistic children* start by understanding why old methods don't work. This knowledge helps transform your approach.

Let's explore why traditional discipline fails for autism spectrum disorder. We'll look at neurological differences and potential harm from punishment. We'll also cover warning signs to watch for.

The Disconnect Between Traditional Discipline and Autistic Neurology

Traditional discipline assumes neurotypical brain processing. These assumptions don't fit autistic neurology. Standard methods expect quick social cue reading and verbal instruction processing. They also assume natural connections between behaviors and consequences.

Autistic children process information differently. They often interpret language literally, needing explicit rather than implied meaning. A phrase like "We don't do that" may lack context for an autistic child.

Sensory processing differences also create problems in **autism behavior management**. What looks like defiance might be sensory overload. A child refusing to sit still may be feeling pain from the chair.



Executive function challenges complicate traditional discipline. Autistic children often struggle with task initiation and working memory. They may forget step two of an instruction before finishing step one.

Autistic individuals need extra time to process verbal information. They might need 30 to 45 seconds to respond. Traditional discipline often demands immediate compliance, setting everyone up for failure.

Discipline Without Meltdowns

Traditional Discipline Assumption	Autistic Neurological Reality	Resulting Disconnect
Children interpret social cues intuitively	Social communication requires explicit instruction	Implied expectations go unrecognized
Consequences teach behavior modification	Connection between action and consequence may not register	Punishment creates confusion rather than learning
Verbal instructions suffice for understanding	Visual supports and concrete demonstrations needed	Auditory-only directions fail consistently
Immediate compliance indicates respect	Extended processing time is neurological necessity	Delayed response misinterpreted as defiance

How Punishment-Based Methods Can Harm Autistic Children

Punishment-based discipline can deeply harm autistic children psychologically. Research shows these methods can trigger anxiety and erode trust. They can also create hypervigilance, leading to more behavioral challenges.

Autistic children experience the world intensely. Their nervous systems process sensory input and emotions with heightened sensitivity. Stern corrections or raised voices can feel disproportionately threatening to them.

One parent observed their autistic child's reaction to a firm "no" as resembling "a fundamental shake in his reality, as someone he had come to totally trust and depend upon suddenly launched an unprovoked aggressive attack (as he would have experienced it) on him."

This account shows the gap between parental intent and autistic perception. A minor correction feels devastating to the child. This explains why **punishment-based autism behavior management** often makes behaviors worse.

Repeated harsh discipline changes autistic children's brains. Their nervous systems become constantly defensive. This chronic stress hurts learning and executive function. It also increases the behaviors the punishment tried to stop.

Punishment for neurological differences harms self-concept development. Children internalize that their natural responses are wrong. This can lead to shame, anxiety, and depression throughout life.

Trauma-informed research shows “toughening up” autistic children backfires. It creates fragility instead of resilience. It prevents self-regulation by keeping the nervous system in survival mode.

Punishment-based methods can damage the parent-child bond. Autistic children need *secure attachment relationships* to navigate overwhelming experiences. When a caregiver becomes unpredictable, the child loses their foundation for growth.

Signs Your Discipline Strategy Needs to Change

Recognizing the need for change shows growth in understanding neurodiversity. Several signs indicate misalignment with your child’s neurological needs. Spotting these patterns allows for timely adjustments.

Escalating behavioral challenges are a key warning sign. If consequences lead to more difficult behaviors, the approach itself is problematic. Effective **autism behavioral support** should reduce challenges over time.

Changes in your child’s emotions provide important clues. Increased anxiety, tears, startling, or withdrawal suggest current methods trigger stress. These emotional shifts often come before behavioral escalation.

- **Deteriorating parent-child connection:** The child seeks less comfort from caregivers, avoids eye contact more frequently, or shows reduced spontaneous affection
- **Increasing meltdown frequency or intensity:** Episodes of dysregulation become more common, last longer, or require more intensive intervention to resolve
- **Diminishing responsiveness to guidance:** The child appears to “tune out” parental instruction, showing reduced engagement with previously effective communication methods
- **Regression in acquired skills:** The child loses previously mastered abilities in self-care, communication, or social interaction
- **Sleep disturbances or somatic complaints:** New patterns of sleep resistance, nightmares, headaches, or stomachaches emerge without medical explanation

Discipline Without Meltdowns

Pay attention to your child's communication about discipline. Fear of mistakes or questioning your love indicate damage to their security. Increased people-pleasing behaviors also signal problems.

Caregiver exhaustion is another important sign. If discipline leaves you drained or disconnected, the approach likely conflicts with everyone's needs. *Gentle parenting approaches for autistic children* should energize your relationship.

Recognizing these patterns opens doors to better strategies. We'll explore frameworks for **autism behavior management** that support genuine growth and emotional well-being.

Why Traditional Discipline Doesn't Work for Autistic Children

Autistic children have unique neurological and developmental differences. These differences shape how they learn, communicate, and interact. Traditional discipline methods don't align with autistic brain functioning.

Standard discipline often misinterprets autistic behavior. What seems like defiance may be sensory distress or communication issues. Punishment can't address these underlying challenges.

Successful autism parenting focuses on understanding behavior causes. This approach transforms how we guide and support autistic children.



Neurological Differences That Impact Learning and Behavior

Autistic brains process information differently. This affects sensory integration, social communication, and reward systems. Traditional discipline assumes neurotypical processing, which doesn't apply to autistic children.

Autistic children often don't respond to social disapproval like neurotypical kids. Shame-based discipline that relies on social pressure becomes ineffective. Approval-seeking behaviors may not motivate autistic children.

Brain studies show autistic individuals process rewards and consequences differently. Effective autism parenting identifies what truly motivates each child.

The Role of Sensory Overload in Perceived Misbehavior

Autistic individuals often experience intense sensory input. Their brains may not filter background noise or adjust to lighting changes easily. This can lead to overwhelming sensory stimulation.

Behavior seen as defiance may be an attempt to escape sensory overload. A child covering their ears isn't being disobedient. They're likely experiencing pain from intense sensory input.

When my autistic clients yell because I've interrupted their routine, they are not looking for attention, they are likely protesting the disruption of a routine that is important to them. When the high school student calls out inappropriately in class, it's probably not to get a laugh, but it may relate to missed social cues and trouble generalizing learned social skills. When a child has a meltdown in the grocery store, it may be due to sensory overload, not because they want more attention.

Punishing sensory-driven behaviors is harmful and ineffective. It adds emotional distress to an already overwhelming situation. Effective autism parenting addresses sensory needs rather than punishing reactions.

Communication Barriers and Misunderstood Intentions

Many autistic children process language differently. Some learn language in chunks, while others use alternative communication methods. These differences create barriers when discipline relies on verbal explanation.

Discipline Without Meltdowns

Traditional discipline assumes children can process complex verbal instructions. For many autistic children, this is neurologically challenging. They may hear words without understanding, especially during stress.

Misunderstandings often lead to perceived misbehavior. An autistic child taking a toy may not grasp social rules. Punishing without addressing comprehension gaps is ineffective.

Executive Function Challenges and Behavioral Expectations

Autistic children often face executive function challenges. These affect planning, organization, and impulse control. Traditional behavioral expectations may be neurologically difficult for them.

Task initiation difficulties can appear as refusal. The child may understand instructions but struggle to start. Consequences won't create missing neural pathways.

Transitions are particularly challenging for autistic individuals. Moving between activities requires more cognitive effort and time. Expecting immediate compliance ignores this neurological reality.

Effective autism parenting accommodates executive function differences. It uses visual cues, extended time allowances, and breaks tasks into manageable parts. This approach works with autistic neurology, not against it.

What Makes Positive Parenting Autism Different

Autism-affirming strategies focus on understanding, not enforcement. **Positive parenting autism** honors autistic neurology while building essential life skills. It differs from conventional discipline and generic positive parenting for neurotypical children.

This approach aligns with autistic children's neurological reality. It acknowledges that standard expectations often clash with autistic information processing. This recognition changes how families handle daily challenges and long-term goals.

Rather than using planned ignoring, using reinforcers, or giving consequences, next time you encounter a challenging behavior try supportive listening, creating opportunities for calming, and teaching new skills. To do

this skillfully, you need to be able to think in depth about how autistic kids think and learn, and figure out what the reason for the behavior really might be.

Shifting from Control to Connection

Traditional discipline focuses on compliance through consequences and rewards. It assumes children change behavior to avoid punishment or gain rewards. **Positive parenting autism** takes a different approach.

Connection-based parenting builds on secure attachment and self-regulation. Parents ask, “What does my child need to succeed?” This shift recognizes that **parenting high-functioning autism** requires skill-building, not enforcing obedience.

The control-to-connection shift creates several key differences:

- **Relationship preservation takes priority** over immediate behavioral correction, recognizing that trust forms the foundation for all learning
- **Emotional regulation becomes the primary goal** rather than outward compliance, understanding that regulated children can access learning and problem-solving
- **Long-term skill development replaces short-term behavior suppression**, focusing on building capacities that serve children throughout their lives
- **Parental understanding deepens** through observation and reflection rather than relying on standardized behavioral protocols

This approach often reveals that “defiant” behaviors are actually communication attempts. It transforms the parent-child dynamic by fostering deeper understanding.

Understanding Behavior as Communication

Positive parenting autism sees all behavior as meaningful communication. It recognizes that actions serve functions like seeking sensory input or expressing unmet needs. This view differs from traditional approaches that see challenging behaviors as problems to eliminate.

Discipline Without Meltdowns

Parents ask, “What is my child trying to tell me?” This question leads to effective interventions:

1. **Identifying the underlying need** that behavior expresses, whether sensory, emotional, or communicative
2. **Addressing root causes** rather than suppressing surface manifestations through punishment or ignoring
3. **Teaching alternative communication methods** that allow children to express needs more effectively
4. **Modifying environments and expectations** to reduce circumstances that trigger distress

This approach turns parents into detectives seeking understanding, not enforcers seeking control. Children feel validated rather than condemned for their responses.

Embracing a Neurodiversity-Affirming Mindset

Neurodiversity-affirming parenting sees autism as a natural neurological variation, not a disorder. It honors autistic traits as valid, not problematic. This view acknowledges challenges but sees them as environmental mismatches, not inherent deficits.

For parents, this mindset has practical implications:

- **Intervention goals shift** from making children appear neurotypical to building functional skills and providing accommodations
- **Autistic traits receive acceptance** rather than elimination efforts, preserving identity and self-esteem
- **Environmental modifications increase** to match the child’s needs rather than forcing the child to adapt to unsuitable environments
- **Progress metrics change** to measure well-being, skill development, and quality of life rather than conformity to neurotypical standards

This approach transforms daily life with autistic children. Movement breaks become scheduled sensory activities. Intense interests become learning pathways, not obsessions to limit.

Parenting high-functioning autism through this lens means celebrating differences while building independence skills. It balances acceptance with support for growth, without confusing the two.

Positive parenting autism reorients family values, goals, and interactions. This framework creates coherence between beliefs and practices that children can trust.

Core Principles of Positive Parenting for Autism Spectrum Disorder

Positive parenting for autism focuses on connection, understanding, and respecting neurological differences. It transforms parent-child relationships from control to collaboration. This approach supports authentic development rather than forced conformity.

Parents must rethink assumptions about behavior, capability, and successful development. Autistic traits are seen as variations needing accommodation, not deficits to eliminate. Behavioral challenges often signal communication attempts or environmental mismatches.

Four interconnected principles form this transformative approach. They address immediate concerns and long-term outcomes. Consistent implementation creates conditions for autistic children to thrive while maintaining their authentic identity.

Presuming Competence in Your Child

Presuming competence recognizes autistic individuals' rich internal experiences and capabilities. It counters deficit-based views of autistic children as fundamentally impaired. This principle sees challenges as mismatches between neurology and environment, not inherent limitations.

Parents interpret ambiguous situations favorably and provide age-appropriate information. They maintain high expectations while offering robust supports. This approach recognizes that capability and demonstrating it are distinct phenomena.

Daily interactions change meaningfully with this principle. Parents present complex concepts to nonverbal children while exploring alternative communication methods. When children struggle, focus shifts to identifying barriers rather than assuming lack of ability.

Discipline Without Meltdowns

This principle extends to emotional and social domains. Seemingly disengaged children may be deeply observing their environment. Those avoiding eye contact may still be attentive to communication.

Prioritizing Regulation Over Compliance

Emotional and sensory regulation form the basis for learning and behavioral development. Dysregulated children can't access higher-order functions or process social information. Demanding immediate compliance is counterproductive, increasing stress and dysregulation.

This principle recognizes that regulated children naturally cooperate. Forced compliance without addressing regulation creates fear-based conformity, eroding autonomy. This is crucial for autistic children, who often experience intense dysregulation.

Parents must recognize dysregulation signs and respond supportively. They should ask, "What regulation need is this child expressing?" rather than "How do I stop this behavior?"

Practical applications of regulation-first parenting include:

- Pausing demands when dysregulation signs appear and offering co-regulation support
- Creating low-demand periods throughout the day for nervous system recovery
- Providing sensory accommodations proactively rather than reactively
- Adjusting expectations based on current regulation capacity rather than arbitrary standards
- Teaching self-regulation skills during calm moments rather than during crisis

Regulation capacity fluctuates based on numerous variables. Parents must adjust support levels dynamically rather than maintaining rigid expectations regardless of context.

Building Trust Through Consistent Support

Autistic children often experience repeated misunderstanding and sensory overload. This creates wariness about caregiver reliability and

environmental safety. Building trust requires robust demonstrations of parental reliability and unconditional acceptance.

Kids need attachment and unconditional care more than they need behavioral training.

Trust develops when parents remain supportive allies despite behavioral challenges. This means responding compassionately during meltdowns and honoring communication attempts. Each interaction either builds or erodes the trust that determines relationship quality.

Consistent support requires predictable emotional responses from parents. Calm reactions to challenges teach children that expressing distress won't cause rejection. Advocating for accommodations shows children their differences will be respected.

The trust-building process often requires parents to repair past ruptures where traditional discipline damaged the relationship. This involves acknowledging misunderstandings and demonstrating that the relationship has fundamentally changed.

Honoring Your Child's Unique Wiring

Respecting autistic traits as integral aspects of identity is crucial. This neurodiversity-affirming view sees autism as neurological variation with both challenges and strengths. It supports authentic self-expression while building skills for functional independence.

This principle distinguishes between traits causing distress and those merely uncomfortable to observers. Stimming, intense interests, and sensory sensitivities represent legitimate needs, not behaviors to suppress. Parents protect these expressions while addressing genuine safety concerns.

Implementation requires examining which adaptations offer genuine support versus forced conformity. Teaching communication device use honors wiring by enabling expression. Forcing eye contact violates this principle by demanding neurologically uncomfortable behavior.

Parents honoring unique wiring demonstrate this commitment through:

- Defending stimming and other self-regulation behaviors as legitimate and necessary

Discipline Without Meltdowns

- Incorporating special interests into learning and daily activities rather than restricting them
- Providing sensory accommodations without shame or apology
- Celebrating autistic identity rather than positioning it as something to overcome
- Prioritizing the child's internal experience over external appearance of normalcy

This approach helps children navigate a neurotypical world without abandoning their authentic identity. The goal becomes building bridges between neurological profiles, not demanding conformity to neurotypical standards.

These four principles work together to create an optimal environment for autistic children. They establish conditions for genuine learning, emotional security, and authentic self-expression. When internalized, these concepts naturally guide specific strategies and techniques.

Respect Plus Structure Equals Better Outcomes

Effective gentle parenting for autistic children balances structure and respect. This approach supports immediate behavioral success and long-term growth. It avoids permissive or authoritarian methods, focusing on connection and guidance.

Containment is key to this balance. It creates a safe environment where children feel understood. Parents must first cultivate calmness within themselves to provide this containment.

One parent found that her own calmness helped her son relax. She realized that every situation was part of their journey. This confidence allowed her to provide better **autism behavioral support**.

Creating Predictable Routines Without Rigidity

Predictable routines help autistic children feel secure. They reduce cognitive load and anxiety. When children know what's next, they can focus on engagement.

However, rigid routines can cause stress when changes occur. The goal is to establish core elements with flexibility points. This teaches adaptation skills gradually.

Start by identifying which routines provide regulation versus arbitrary preferences. Keep core steps consistent, but allow flexibility in timing or choices. For example, always brush teeth after breakfast, but let the child choose their clothes.

Visual supports enhance predictability without creating rigidity. Schedule boards help children anticipate transitions. Include a “surprise” card to normalize flexibility.

Use transition warnings to preserve routine predictability. Give five-minute and two-minute warnings before changes. Pair these with visual timers for concrete countdowns.

Honoring Autonomy While Providing Boundaries

Thoughtful boundaries create safety for exercising autonomy. They establish parameters that make meaningful choices possible. This transforms boundary-setting from restriction to liberation.

Present non-negotiable boundaries collaboratively, not authoritatively. Explain reasons clearly. For example, “We don’t hit because it hurts people” is more effective than “Because I said so.”

Within essential boundaries, give autistic children maximum autonomy over personal choices. This builds self-knowledge, executive function skills, and intrinsic motivation. Allow choices in clothing, food preferences, activities, and social engagement levels.

Use the distinction between preference and need to guide boundary decisions. Maintain nutritional boundaries while honoring food preferences. Require outdoor time for regulation, but let the child choose the activity.

Use collaborative problem-solving when conflicts arise. Work together to find solutions that address needs. This prevents resentment and teaches negotiation skills.

Balancing Flexibility and Clear Expectations

Autistic children need clear expectations and accommodations for variable capacity. Clear expectations provide a cognitive framework that reduces uncertainty. Flexibility acknowledges that capacity varies based on many factors.

Discipline Without Meltdowns

Set expectations while recognizing variable capacity. For example, expect homework completion but adjust support as needed. Keep the goal consistent, but vary the path to reach it.

This balance prevents frustration from static expectations and confusion from unpredictable ones. Children need to know the goal, even when support varies.

Respect and structure work together in daily implementation. Structure without respect becomes authoritarian control. Respect without structure creates anxiety-provoking uncertainty.

Respect plus structure equals better outcomes for autistic children. This approach creates a consistent framework that honors autonomy and accommodates differences. It provides containment necessary for regulation and development.

Step-by-Step Guide to Implementing Autism Spectrum Parenting Techniques

Autism behavior management turns theory into practice through a step-by-step framework. Many parents know positive parenting but struggle to apply it daily. A systematic approach helps families address their child's unique needs.

This method shifts parenting from reactive to proactive. Parents learn to spot patterns, recognize triggers, and prevent issues. It takes patience, but greatly improves family life and child well-being.

Step 1: Observe and Document Your Child's Behavior Patterns

Careful observation is key to effective autism parenting. It turns random events into clear trends. This reveals the reasons behind behaviors.

Experts say: *“When we see a behavior we think, ‘What skills or accommodations does this child need in this scenario to be effective?’”* This view turns challenges into chances for growth.

What to Track and Why It Matters

Good tracking covers many factors. Parents should note **time of day** for behaviors. Many autistic kids show different patterns throughout the day.

Preceding activities give context for behavior triggers. A homework meltdown might stem from school day stress. Noting what happened before issues helps spot hidden causes.

Also track noise, light, and temperature. Physical states like hunger and tiredness matter too. Social demands and sensory factors complete the picture.

Creating a Simple Behavior Log

The best tracking systems are thorough yet simple. Complex logs often get abandoned. A basic log that's used regularly works better than a detailed one used rarely.

Some families prefer apps or spreadsheets. Others like paper notebooks. Consistency matters more than perfection. Even partial data can show patterns.

Try tracking for two to three weeks at first. This gives enough info without being overwhelming. The goal is to spot patterns, not keep records forever.

Step 2: Identify Environmental and Sensory Triggers

After spotting patterns, look at your child's world through a sensory lens. Autistic kids process their surroundings differently. What seems normal to you might be too much for them.

The sensory world includes many parts. **Auditory input** covers volume, pitch, and background noise. Fluorescent lights can be a problem. Their flicker, invisible to many, can bother autistic people.

Visual stimulation includes clutter, movement, and complex patterns. Touch experiences involve clothing, temperature, and unexpected contact. Smells from cooking or cleaning can trigger strong reactions.

Body awareness and balance needs affect behavior too. Many autistic kids seek heavy work or movement to feel calm. Without these, they might act in ways adults find disruptive.

Common Triggers Parents Often Miss

Some triggers often go unnoticed. *Fluorescent lighting flicker* is a big one. It can cause stress and headaches for autistic individuals.

Discipline Without Meltdowns

Clothing tags and seams can be very irritating. What's a minor bother to some feels like constant scratching to others. Wearing uncomfortable clothes all day drains energy.

Background noise from appliances creates stress parents might not notice. Fridge hums and computer fans add up. For autistic kids who can't filter sounds well, this causes ongoing stress.

Trigger Category	Specific Examples	Behavioral Impact	Quick Assessment Method
Auditory	Fluorescent buzz, appliance hum, distant traffic, overlapping conversations	Increased irritability, difficulty concentrating, covering ears, leaving spaces	Turn off suspected sound sources and observe behavior changes
Visual	Flickering lights, high-contrast patterns, visual clutter, reflective surfaces	Eye strain, headaches, avoidance of certain rooms, squinting or looking away	Dim lights or declutter space and monitor stress indicators
Tactile	Clothing tags, seams, unexpected touch, temperature changes, fabric textures	Constant fidgeting, removing clothes, aggressive responses to touch	Offer tagless clothing alternatives and observe comfort levels
Olfactory	Cleaning products, perfumes, cooking odors, air fresheners, personal care products	Nausea, leaving spaces, holding breath, complaints about smells	Eliminate scented products systematically and track behavioral improvements

Step 3: Develop Proactive Prevention Strategies

Spotting patterns isn't enough. Parents must turn insights into action plans. This prevents issues before they start. It's the core of good **autism behavior management**.

Prevention works on many levels. It includes changing the environment, adjusting schedules, and improving communication. Each part helps create conditions where success is more likely than struggle.

The best strategies anticipate challenges. If transitions are hard, use warnings and visual timers. If afternoons are tough, plan demanding tasks for mornings when energy is higher.

Environmental Modifications That Work

Lighting changes can have a big impact. LED bulbs replace flickering fluorescents. Dimmer switches allow custom light levels. Natural light often works best for autistic children.

Sound management reduces overwhelm. White noise masks unpredictable sounds. Noise-canceling headphones provide portable quiet. Clever furniture placement creates calm zones in busy spaces.

Sensory spaces at home offer regulation areas. These include weighted blankets, fidget toys, and soft lighting. Having a special spot reduces the need to leave family activities when overwhelmed.

Temperature control is crucial. Autistic people often feel heat and cold differently. Let kids manage their comfort with layers, fans, or heating pads. This supports independence and meets physical needs.

Step 4: Create Visual Supports and Communication Tools

Visual aids reduce language demands and provide lasting information. Unlike spoken words, visual tools stay available for reference. This helps with focus and honors different learning styles.

Visual schedules are a key support tool. They show daily routines using pictures or words. Kids can check their schedule instead of asking about plans. This cuts anxiety and builds independence.

First-then boards explain what happens in order. They show the current task and what comes next. This helps kids understand expectations without long explanations.

Social stories prepare kids for new situations. These short, personal tales describe what to expect and how to act. Reading them before events reduces worry and supports social success.

Discipline Without Meltdowns

Communication boards help kids who struggle with speaking. They can point to express needs instead of forcing words. Many children communicate better with visual aids than speech alone.

Visual supports work throughout the home. Timers show transition times. Emotion charts help kids express feelings. Task cards break big jobs into small steps with pictures.

Using these four steps changes parenting from reactive to proactive. Families move from confusion to understanding. This knowledge leads to targeted help that creates real, lasting improvement in daily life.

Managing Autism Meltdowns Without Punishment

Autistic children's meltdowns are neurological emergencies, not behavioral choices. They need compassionate support, not discipline. This changes parenting from punitive to protective.

Effective meltdown management focuses on nervous system regulation. Punishment during meltdowns adds trauma to overwhelm. One parent eliminated daily meltdowns over five years using supportive containment without punitive responses.

Meltdowns require a new parental response strategy. This section helps distinguish meltdowns from other behaviors. It also covers prevention strategies and support during these challenging episodes.

Recognizing the Difference Between Meltdowns and Tantrums

Meltdowns and tantrums are very different. Mixing them up can lead to harmful responses. Tantrums are goal-directed behaviors that stop when demands are met.

Meltdowns show complete nervous system overwhelm. They continue regardless of changes in the situation. Children can't simply "stop" a meltdown through willpower or consequences.

Meltdowns typically involve longer recovery periods, sometimes lasting hours. Children often appear exhausted afterward, as if they've run a marathon.

[Table content remains unchanged]

Self-injury often occurs during meltdowns but rarely in tantrums. These actions try to regulate overwhelming experiences. They're not manipulative tactics. Recognizing this prevents punishing neurological crises.

Autism Meltdown Prevention Through Early Recognition

Prevention is the best meltdown strategy. Parents can intervene before full overwhelm by spotting subtle signs. These early warnings follow patterns once parents know what to watch for.

Common signs include increased stimming as children try to self-regulate. Decreased talking often signals approaching overwhelm. Less eye contact and quick startle responses also indicate rising stress.

Physical tension is another reliable indicator. Children may show rigid posture or tense facial expressions. Their ability to switch activities decreases noticeably. Small frustrations suddenly cause big distress.

Early intervention can prevent full meltdowns through several approaches:

- [List content remains unchanged]

Documenting patterns helps parents identify their child's unique escalation sequence. This knowledge transforms meltdown prevention from crisis management to proactive support. Parents report fewer meltdowns once they master early recognition.

Creating a Safe Space for Regulation

A dedicated regulation space helps children process overwhelming experiences. This area should minimize sensory input while offering regulation tools. It can be a room, area, or portable kit.

Effective spaces have dim lighting and minimal clutter. Soft surfaces prevent injury during physical dysregulation. The space should feel comforting, not punitive—a sanctuary, not a timeout spot.

Stock the space with sensory tools the child prefers. These might include weighted blankets, fidget toys, or noise-canceling headphones. Provide regulation options without adding demands during the episode.

Safety guides the design of regulation spaces. Remove items that could cause harm. Ensure the child can't accidentally hurt themselves. Create an environment for safely experiencing overwhelming states.

Co-Regulation Techniques That Actually Help

Co-regulation recognizes that children regulate with caregivers. These techniques support processes the child can't manage alone. Effective co-regulation respects the child's state while offering stabilizing presence.

The parent's calm state is crucial during meltdowns. Children's nervous systems respond to nearby adults' emotions. A parent's calm presence helps the child's overwhelmed system start regulating.

The Power of Calm Presence

Calm presence isn't emotional detachment. It's grounded awareness that communicates safety to the child. Parents who stay regulated provide the most effective support possible.

This involves managing your own breath, posture, and energy. Practice deep breathing or muscle relaxation while staying with your child. Your regulated system offers a template for your child's system.

Keep verbal communication minimal during meltdowns. The child's language processing is limited. Simple phrases like "You're safe" or "I'm here" work best. Long explanations or reasoning are counterproductive.

Physical Support Strategies

Physical support must respect individual preferences. Some children find deep pressure calming. Others feel touch as sensory assault during overwhelm. Learn your child's needs through careful observation.

Deep pressure techniques include firm hugs or gentle squeezing. These activate the proprioceptive system, which often helps regulate. However, only offer these during meltdowns, never force them.

Heavy work activities can support regulation for some children. This might involve pushing walls or carrying heavy objects. These strategies work best during early escalation, not full meltdown.

Respectful proximity recognizes that optimal distance varies. Some children need close presence, others need space. Offer yourself at different distances. Let the child determine what feels supportive.

Recovery and Repair After a Meltdown

Chapter 1: Rethinking Discipline for Autism

The post-meltdown period offers chances for connection and learning. Avoid consequences, lectures, or processing demands. The child remains fragile after their neurological storm.

Focus on continued regulation and physical recovery. Children often feel embarrassed or confused by their loss of control. Reassure them they're loved and accepted. Offer comfort like hydration or quiet activities.

Relationship repair starts with parent acceptance and compassion. Express that the meltdown wasn't their fault. Many children fear they're "bad" because of meltdowns. Combat this shame by explaining meltdowns as nervous system overwhelm.

Discuss meltdowns only when the child is fully regulated. Explore what they remember and what helped. Focus on future prevention, not behavioral correction.

Document meltdown patterns, triggers, and effective interventions. This builds knowledge for better future responses. A systematic approach transforms meltdown management from crisis reaction to informed support.

Autism Sensory Strategies for Daily Discipline Challenges

Many behaviors in autism stem from sensory overload or lack of input. Parents can use **autism sensory strategies** to address underlying causes. This approach transforms **autism behavior management** by treating sensory needs as legitimate neurological requirements.

Sensory processing differences create constant environmental challenges for autistic individuals. Everyday stimuli like lights, sounds, or textures can cause genuine distress. Understanding this helps parents prevent behavioral issues through sensory support.

Building a Sensory-Friendly Home Environment

Creating sensory-friendly spaces at home reduces a child's stress level. This proactive approach is one of the most powerful **sensory-friendly parenting strategies** available. It helps children handle unexpected demands without becoming dysregulated.

Each sensory system needs individual consideration when designing home environments. Visual, auditory, and tactile sensitivities can make

Discipline Without Meltdowns

everyday spaces overwhelming. Creating distinct zones within the home serves different sensory needs throughout the day.

Calm-down corners with dim lighting provide retreat when overwhelm approaches. Active play spaces with crash pads offer outlets for sensory-seeking behaviors. These areas communicate clear expectations while honoring neurological needs.

Lighting, Sound, and Texture Modifications

Replacing harsh lights with warm LEDs or natural light reduces visual stress. Dimmer switches allow adjustments based on time and regulation state. Sound management involves reducing unwanted input and providing appropriate background noise when needed.

Texture considerations extend beyond fabrics to flooring, furniture, and everyday objects. Offering variety allows children to seek regulating textures while avoiding distressing ones. Removing clothing tags and choosing soft bedding eliminates unnecessary friction points.

Using Sensory Tools to Prevent Behavioral Escalation

Sensory tools provide specific input to help maintain optimal arousal levels. Strategic use of these tools prevents behavioral challenges. Weighted items like blankets or vests offer calming deep pressure input.

Fidget tools address tactile and proprioceptive needs during still activities. Appropriate fidgets allow children to meet sensory needs while participating in necessary tasks. Oral sensory tools like chewable jewelry prevent inappropriate chewing on clothing or objects.

Sensory Diet Basics for Everyday Use

A sensory diet is a personalized schedule of activities providing regular sensory input. This approach maintains regulation by meeting sensory needs throughout the day. Parents learn to recognize their child's unique sensory profile and provide appropriate input.

Identifying sensory seeking or avoiding patterns guides diet development. Most children show different patterns across sensory systems, requiring individualized approaches. Scheduled activities might include heavy work tasks, movement breaks, or quiet time.

Timing and frequency of sensory activities are crucial. Providing input before challenging situations maximizes effectiveness. Morning movement routines prepare children for school demands. Pre-dinner activities prevent mealtime struggles.

Accommodating Sensory Needs in Public Settings

Public environments present challenges because parents can't control sensory input. However, preparation and portable accommodations allow families to navigate community spaces successfully. These strategies enable participation while respecting neurological needs.

Consider a child screaming in a grocery store. A sensory-informed approach recognizes overwhelming stimuli as legitimate sources of distress. Providing accommodations addresses the actual problem rather than punishing the child's neurological response.

Effective public accommodations include noise-canceling headphones, sunglasses, and visual schedules. Timing considerations significantly impact outing success. Shopping during off-peak hours and planning trips after sensory input activities prevents overwhelm.

Creating portable sensory kits ensures necessary supports are always available. These kits might contain fidget tools, chewables, and noise-reducing headphones. Having these items accessible transforms overwhelming situations into manageable experiences.

Advance preparation includes discussing outings using visual supports or social stories. Explaining expected sensory experiences reduces anxiety. Identifying safe spaces provides security. These preparations demonstrate respect for the child's legitimate needs.

Meeting sensory needs is basic neurological support, not special treatment. This perspective helps parents advocate confidently for accommodations. It transforms sensory support into the foundation of effective, compassionate autism parenting.

Effective Communication With Autistic Kids

Communicating with autistic kids requires changes in how parents speak and interact. Autistic children often process language differently than their peers. They may need more time to understand and can struggle during stress.

Discipline Without Meltdowns

Traditional discipline methods rely on quick verbal understanding. This approach fails when children can't process language fast enough. Successful autism parenting recognizes that **changing how we communicate prevents behavior problems better than consequences.**

Parents who adapt their style to match autistic language processing create better understanding. This reduces frustration and builds stronger connections between parent and child.

Adjusting Your Communication Style for Better Understanding

Changing how we communicate is crucial, not optional, for **neurodiversity-affirming parenting.** Many parents use methods that work for typical kids without realizing they create barriers. Adjusting how we speak can turn conflicts into chances for understanding.

The Power of Clear, Concrete Language

Autistic individuals often take language literally. They may struggle with idioms, sarcasm, and abstract ideas. Vague instructions like “be good” are hard to understand and follow.

Specific, observable instructions work better. Instead of “settle down,” say “sit in your chair with your hands on the table.” This clarity helps kids succeed.

Changing from abstract to concrete language takes practice. Parents need to identify common phrases and create specific alternatives:

- **Abstract:** “Clean up this mess” → **Concrete:** “Put the blocks in the blue bin”
- **Abstract:** “Use your words” → **Concrete:** “Tell me what you need”
- **Abstract:** “Be careful” → **Concrete:** “Hold the railing with both hands”
- **Abstract:** “Calm down” → **Concrete:** “Take three deep breaths”

This precise language removes hidden meanings. Children get clear information about what to do and how to succeed.

Reducing Verbal Demands During Stress

Autistic kids process less language when stressed or overwhelmed. More talking during these times makes things worse. It creates a cycle where communication demands exceed processing ability.

During stressful moments, *reduce verbal input*. Use short phrases, point to pictures, or use simple gestures. This works because language processing ability decreases during stress.

Prepare simple communication strategies before difficult situations. Identify key information and practice delivering it in the most accessible way.

Using Visual Supports and Social Stories

Visual supports and social stories provide information that doesn't require instant processing. These tools act as memory aids that children can use on their own. Unlike speech, visual info stays available for review.

These techniques work well because they match how many autistic individuals process information. Visual aids often work better than spoken words, reducing mental effort and increasing independence.

Creating Effective Visual Schedules

Visual schedules show daily activities and help with transitions. They answer important questions: What's next? How long will this last? When can I do my favorite activity?

Good visual schedules follow these rules:

- 1. Match the format to the child's understanding:** Use photos, drawings, or words based on the child's skills
- 2. Show the right amount of time:** Some kids need a full day, others just a few activities
- 3. Include ways to mark progress:** Use checkboxes or removable cards to show completion
- 4. Mix in fun activities:** Include preferred tasks to motivate
- 5. Keep it current:** Update regularly so children trust it

Discipline Without Meltdowns

Children can use the schedule on their own, reducing the need for verbal reminders. This independence increases predictability and reduces stress.

Writing Social Stories That Help

Social stories are short, personal narratives that explain situations or expectations. They use concrete language and pictures to teach new skills or prepare for challenges. These stories help by providing information in an easy-to-process format.

Good social stories follow a specific structure. They describe where, who, what, and why about a situation. They use mostly descriptive sentences, with few instructions.

Social Story Component	Purpose	Example Sentence
Descriptive Sentences	Provide factual information about the situation	“The fire alarm makes a loud sound when there is a fire drill”
Perspective Sentences	Describe feelings and reactions of others	“Other children might feel startled by the loud noise”
Directive Sentences	Suggest appropriate responses (use sparingly)	“I can cover my ears if the sound is too loud”
Affirmative Sentences	Emphasize important points and values	“Covering my ears during fire drills is a good way to take care of myself”

Parents write stories from the child’s viewpoint, using present or future tense. Keep them short, about 5-10 sentences, and add relevant pictures. Reading the story often before the actual event helps reduce anxiety.

Teaching and Respecting Alternative Communication Methods

Good autism parenting values all forms of communication. Some autistic children communicate best through pictures, tablets, sign language, or typing. Supporting their preferred method helps overall development.

Research shows that alternative communication doesn’t reduce motivation for speech. Instead, it often supports language growth by reducing frustration. A child who can express needs feels less stressed, which helps learning in all areas.

Parents can help by finding communication systems that match their child's skills and likes. Some kids do well with simple picture boards, others with high-tech devices. The key is that **any functional communication deserves respect and support**.

Parents should use the chosen system themselves during daily activities. This shows how to communicate various messages and teaches vocabulary and grammar naturally.

Giving Processing Time and Avoiding Repetition

Autistic individuals often need more time to process spoken information and respond. This extra time is due to brain differences, not lack of understanding. Not allowing enough time can cause communication breakdowns.

Most adults expect responses within 1-3 seconds. Many autistic children need 10-30 seconds or more to process fully. During this time, their brain works to understand, think, and respond.

Repeating instructions too soon makes things worse. It adds new information before the child finishes processing the first message. Each repetition creates more work rather than helping.

Parents should give information once, then wait silently. Counting slowly helps allow enough processing time. Visual cues can help both parent and child during waiting periods.

If there's no response after waiting, try a different approach. Simplify the language, use visuals, or break the request into smaller steps. This shows respect for communication differences while working towards understanding.

These communication changes form the basis of effective autism parenting. By respecting how autistic children process language, parents build understanding, trust, and strong relationships.

Social Skills Development for Autistic Children

Autistic children have unique social preferences. These should be respected while building skills aligned with their goals. Traditional methods often push for conformity to neurotypical standards. This can suppress authentic self-expression.

Discipline Without Meltdowns

A neurodiversity-affirming approach recognizes autistic social styles as valid. It focuses on functional skills for meaningful communication and relationships. This method builds capacity rather than trying to eliminate differences.

Parents using **autism spectrum parenting techniques** see better results with this approach. Children develop stronger social skills when their differences are respected. They show more motivation and engagement in learning.

Teaching Social Skills Through Interest-Based Learning

Interest-based learning is ideal for **social skills development for autistic children**. It uses the child's passions to create engaging learning opportunities. This method taps into the intense interests often seen in autistic children.

Parents can include social learning in preferred activities. For example, a child who loves dinosaurs could visit museums with friends. They might join online fossil communities or work on dinosaur projects together.

This approach works well because it connects to positive emotions and attention. Children process and retain information better when it relates to their interests. It's more effective than traditional social skills training.

To implement this, observe your child's interests closely. Then, introduce social elements gradually. Start with parallel activities that need minimal interaction. Increase social demands as your child shows readiness.

Creating Low-Pressure Social Opportunities

Many autistic individuals find typical social settings exhausting. **Neurodiversity-affirming parenting** recognizes these challenges. It creates social chances that don't overwhelm the child.

Low-pressure settings might include structured activities with clear rules. Board games, art classes, or nature walks can work well. These allow interaction without constant conversation or eye contact.

Small groups are usually better than large gatherings. They reduce sensory input and simplify social dynamics. Two or three participants create manageable opportunities for interaction.

Respecting Your Child's Social Preferences and Boundaries

Autistic individuals often prefer different social patterns than their peers. These preferences are valid neurological differences, not flaws. Good **autism spectrum parenting techniques** distinguish between helpful skills and unnecessary conformity pressures.

Consider whether social expectations truly serve your child's wellbeing. Ask if a skill will increase their autonomy and satisfaction. Be wary of demands that require exhausting masking.

Respect your child's need for alone time. Social interaction requires cognitive and sensory resources. Autistic children often need substantial recovery time after social demands.

Redefining Social Success on Your Child's Terms

Social skills development for autistic children should focus on the child's values and goals. A fulfilling social life may look different for autistic individuals. Success might mean one deep friendship or satisfaction from online communities.

Parents using **neurodiversity-affirming parenting** work with their children to set personal social goals. They observe what brings satisfaction versus stress. Success is measured by the child's wellbeing, not external standards.

The goal is to help autistic children navigate social situations authentically. This approach honors autistic social identity as valid and valuable. It builds capacity without demanding conformity.

ABA Therapy Alternatives and Compassionate Autism Behavioral Support

Modern autism support focuses on respecting the child's perspective while building meaningful skills. Research shows positive behavioral supports work better than traditional disciplinary measures. These approaches build skills, modify environments, and focus on strengths rather than punishment.

Families have many options for supporting their child's development. Each approach offers unique benefits when respecting neurodiversity. The key is choosing interventions that match your family's values and your child's needs.

Discipline Without Meltdowns

Let's explore **ABA therapy alternatives** and complementary frameworks that prioritize emotional well-being. Understanding these options helps parents make informed decisions about their child's support system.

Understanding Concerns About Traditional ABA Therapy

ABA has evolved, but concerns persist about certain traditional approaches. Some methods used aversive techniques that caused distress and potential harm. These practices focused on behavioral conformity over emotional safety.

Critics worry about therapy models that try to eliminate autistic traits rather than build useful skills. This approach can damage self-esteem and create lasting psychological impacts.

Extended compliance training is another concern. Hours of adult-directed drills may teach children to suppress their own needs. **This pattern can interfere with developing internal regulation and authentic self-advocacy skills.**

Modern ABA practitioners now use more natural and child-centered approaches. Many focus on positive reinforcement and follow the child's interests. However, parents should carefully evaluate any program's philosophy and techniques.

Consider whether the intervention respects the child's autonomy and builds on strengths. Therapy should enhance quality of life, not just achieve behavioral conformity.

Play-Based and Child-Led Therapy Approaches

Child-led models follow the child's interests rather than imposing activities. The therapeutic relationship becomes the foundation for learning and growth. Play-based methods build skills through fun, engaging experiences.

The child's intrinsic motivation drives the therapeutic process. Two effective approaches support development while respecting neurodiversity. Both focus on relationship quality and emotional connection.

Floortime and DIR Model

Floortime emphasizes emotional connection and interactive play for development. Therapists and parents join the child's world, following their lead. The approach builds complex interactions through six developmental milestones.

Floortime recognizes each child's unique sensory and processing patterns. Interventions are tailored to the child's profile. **Each milestone builds upon the previous one through playful, child-directed interactions.**

Parents learn to identify "circles of communication" that build connection and cognitive skills. Expanding these circles develops sophisticated thinking and relating abilities.

Relationship Development Intervention

RDI focuses on developing flexible thinking and authentic relationship skills. It builds competence in navigating uncertainty, unlike rigid social scripts. The model uses scaffolded experiences that increase in complexity.

Parents create "productive uncertainty" to motivate children to seek information and co-regulation. *This process builds the foundation for collaborative problem-solving and shared enjoyment.*

Activities have no set outcomes, encouraging flexible adaptation. RDI emphasizes quality of interaction over quantity of skills. Progress is measured through increasing capacity for experience-sharing and problem-solving.

Occupational Therapy and Sensory Integration

Occupational therapy (OT) addresses neurological differences that contribute to behavioral challenges. Many "problem" behaviors reflect sensory processing or motor planning issues. Addressing these foundational issues often reduces behavioral concerns.

Sensory integration therapy helps children process sensory information more effectively. Therapists assess responses to various sensory inputs. They design activities to support nervous system regulation.

This approach recognizes that behavior often reflects attempts to meet sensory needs. OT provides alternative strategies and environmental modifications. It also addresses functional skills to increase independence and reduce frustration.

Discipline Without Meltdowns

Parents can extend OT principles into daily routines. Creating a sensory-friendly home and incorporating movement breaks support ongoing regulation.

Speech Therapy Focused on Functional Communication

Effective speech therapy prioritizes functional communication over spoken language alone. This means expressing needs and thoughts through any effective method. Options include speech, AAC devices, sign language, or picture systems.

Modern approaches recognize that communication serves to connect and navigate the world. *A child who communicates through typing or AAC is successfully communicating, even without speech.*

Therapy targets might include expanding vocabulary in interests or building confidence in alternative communication. Pragmatic language skills are important, but should enhance authentic connection, not mask autistic traits.

Parents play a crucial role by honoring all communication attempts. Creating a rich environment means responding to all forms of expression.

Building Autism Behavioral Support at Home

Parents can implement positive behavior support at home. These strategies focus on understanding behavior's purpose and teaching new skills. The key is recognizing that all behavior communicates something meaningful.

Functional behavioral assessment helps identify behavior patterns and underlying needs. This allows parents to address root causes rather than just reacting.

Proactive changes prevent many challenges. This might include establishing routines and reducing sensory triggers. **Prevention proves far more effective than intervention after problems arise.**

Teaching replacement skills gives children better ways to meet their needs. If a child hits when overwhelmed, teaching them to request breaks addresses the issue.

Simple data tracking helps identify effective strategies. Even brief notes can reveal patterns that inform better approaches.

Implementing these principles differs from traditional ABA. Parents can use reinforcement while maintaining warm relationships. The focus is on respecting autonomy and meaningful goals.

Building support networks enhances home-based efforts. Connecting with other parents and professionals provides strategies and emotional support.

[Table content remains unchanged]

Choosing therapy alternatives requires considering your child's needs and your family's values. Many families combine approaches for comprehensive support.

Effective therapy respects your child's neurology and builds on strengths. It prioritizes emotional well-being alongside skill development. This supports authentic growth rather than just shaping behavior.

Practical Tools for Autism Behavior Management at Home

Effective autism behavior management at home requires concrete tools. These tools transform abstract expectations into visible, predictable structures. They prevent challenges before they escalate by modifying the environment proactively.

Tools work best when they support a child's self-regulation. They shouldn't be used primarily for adult control. Research shows that specific accommodations prevent behavioral challenges more effectively than consequences.

Creating Visual Schedules and Routine Charts

Visual schedules turn abstract time concepts into concrete, visible information. They reduce anxiety and support smoother transitions between activities. Unlike verbal instructions, visual schedules remain available for repeated consultation.

These tools help children see what comes next without relying on memory. This independence reduces the need for verbal prompts. It's especially helpful when sensory systems are already taxed.

Visual schedules can be simple or complex. Simple first-then boards show immediate sequences. More complex schedules display entire days or weeks.

Discipline Without Meltdowns

Physical visuals offer tactile engagement and freedom from screen time concerns. Children can move task cards, providing satisfying sensory feedback. Digital tools allow easy modification and offer portability for use outside the home.

Parents should consider the child's sensory preferences when choosing formats. Some children find screens overwhelming. Others navigate digital interfaces intuitively and prefer technological solutions.

Implementing Token Systems That Respect Autonomy

Token systems visually represent progress toward goals or rewards. They make abstract concepts like “later” concrete. When used respectfully, these systems support cognition rather than control behavior.

Respectful token systems involve children in goal selection. This ensures the systems support meaningful outcomes for the child. Visual representations help children understand time-based concepts and cumulative progress.

Effective implementation celebrates effort, not just outcomes. Systems acknowledge attempts, persistence, and problem-solving. This approach maintains motivation while recognizing that regulatory capacity fluctuates.

Using Timers and Transition Warnings Effectively

Timers make time visible for children who perceive it differently. They provide countdown information that transforms waiting into comprehensible processes. Visual timers showing diminishing colored sections are particularly effective.

Transition warnings combine timing with advance notice. They prepare children for upcoming changes before they occur abruptly. The standard pattern provides warnings at predictable intervals.

Consistency in warning patterns builds predictability. Children learn to anticipate transitions and begin disengaging from activities independently. This gradual process respects the difficulty many autistic individuals experience with sudden attention shifts.

Developing Personalized Calm-Down Kits

Calm-down kits contain portable collections of sensory and regulatory tools. They're customized to individual children's sensory profiles and

preferences. These kits acknowledge that **autism behavioral support** requires individualized approaches.

The development process involves observing which sensory inputs calm the child. Kits should be available in multiple locations to ensure tools remain accessible. Children who can independently access their kits build self-regulation skills.

Regular updates maintain kit relevance as children's preferences evolve. Involving children in kit customization increases investment in the tools. It also ensures contents align with current preferences.

Essential Items for Sensory Regulation

Effective calm-down kits typically include items addressing multiple sensory systems. The specific combination depends on individual sensory profiles. Common categories provide starting points for customization.

- **Tactile tools:** Fidget items, textured objects, stress balls, or therapy putty provide hand-based sensory input that many children find organizing and calming
- **Auditory regulation:** Noise-canceling or noise-reducing headphones block overwhelming environmental sounds, while some children prefer calming music or white noise through earbuds
- **Visual calming:** Sunglasses reduce visual brightness, while visual calm-down sequences or preferred images provide focusing points during dysregulation
- **Oral sensory tools:** Chewable necklaces, gum, or crunchy snacks address oral sensory seeking that intensifies during stress for many autistic children
- **Proprioceptive input:** Small weighted lap pads, resistance bands, or hand strengtheners provide heavy work input in portable formats

Comfort objects maintain importance regardless of age. They provide psychological comfort alongside sensory regulation. These objects shouldn't be dismissed as immature. They're legitimate regulation tools offering reassurance during difficult moments.

Visual calm-down sequences guide children through regulation steps. They provide structure when independent problem-solving becomes difficult. Simple picture-based instructions show breathing exercises, stretching, or other calming strategies.

Conclusion

Building Long-Term Success Through Autism Acceptance and Special Needs Parenting Support

Long-term success for autistic individuals relies on acceptance and environmental accommodation. **Neurodiversity-affirming parenting** focuses on well-being, self-knowledge, and quality of life. This approach values progress over eliminating autistic traits.

Autism acceptance is key to sustainable positive parenting. It sees autism as a valid way of being, not a condition needing a cure. Parents work with their child's neurology instead of against it.

The goal shifts to helping children become successfully autistic. This approach nurtures their unique strengths and abilities.

Special needs parenting support is crucial for maintaining these approaches. Parents need resources for their own well-being to provide a calm presence.

Connecting with other families raising autistic children offers valuable insights. Engaging with autistic adults provides perspective on long-term outcomes and childhood experiences.

Building self-advocacy skills is vital when parenting autistic children. Teaching kids to recognize their needs empowers them throughout life.

Providing tools for communicating needs creates lasting independence. This approach works for all autism presentations, including high-functioning autism.

The most valuable gift parents can offer is secure attachment and self-acceptance. Children who feel worthy of love develop confidence to navigate the world.

This confidence helps them thrive in a world not designed for neurodivergent individuals. It's the foundation for their long-term success and happiness.

FAQ

Why doesn't traditional discipline work for my autistic child?

Traditional discipline methods fail for autistic children due to their unique brain processing patterns. These kids experience differences in sensory integration, communication, and executive functioning. What looks like defiance often stems from sensory overload or communication attempts.

Punishment-based approaches don't address these neurological realities. They can make things worse by adding stress to already overwhelming situations. Traditional discipline assumes a level of control that may not be possible during stressful moments.

What's the difference between a meltdown and a tantrum in autistic children?

Meltdowns are complete nervous system overloads. They involve loss of control and continue even when demands are removed. Meltdowns are neurological crises that require longer recovery and may include self-harm. Tantrums, however, are goal-directed behaviors. They stop when the desired outcome is achieved or the audience leaves. Understanding this difference prevents mishandling neurological overwhelm as bad behavior.

How do I start implementing positive parenting techniques for autism at home?

Begin by observing and tracking challenging behaviors. Note when they occur, what happened before, and any sensory factors. Look for patterns that might not be obvious during single incidents. Identify specific triggers by examining your child's environment through a sensory lens. Consider sounds, visuals, textures, smells, and physical needs. Develop strategies to prevent issues before they escalate. Create visual supports and communication tools. These reduce language processing demands and provide concrete information your child can use independently.

What does "presuming competence" mean in autism parenting?

Presuming competence means believing autistic children understand more than they show. It recognizes that their behaviors have valid

reasons. This approach assumes kids can learn and grow with the right support. In practice, it means interpreting unclear situations positively. It involves providing age-appropriate information and experiences. Maintain high expectations while offering strong support. Trust that your child has important thoughts, even if expressed unconventionally.

Should I prioritize my child's emotional regulation or behavioral compliance?

Always prioritize regulation over compliance. Emotional and sensory regulation is the foundation for all learning and behavior. A dysregulated child can't think clearly, process social cues, or control their actions. Forcing compliance without regulation only teaches fear-based conformity. It erodes self-trust and autonomy. A regulated child naturally moves toward cooperative behavior. Once regulated, effective behavioral guidance becomes possible.

How can I tell if sensory issues are causing my child's challenging behaviors?

Look for behavior patterns linked to specific environments or conditions. Watch for reactions to certain places, times of day, lights, or noise levels. Common signs include ear covering, texture avoidance, and distress in crowded spaces. Track if behaviors improve in quiet, dim areas or with specific sensory input. Many "defiant" behaviors actually show attempts to escape overwhelming stimulation. They might also indicate a need for regulating sensory input.

What are visual supports and why are they important for autistic children?

Visual supports are concrete representations of information. They include schedules, choice boards, and task sequences. These tools reduce reliance on real-time language processing, which many autistic children find challenging. Visual supports make abstract concepts concrete and reviewable. They decrease anxiety by increasing predictability. These tools support transitions and reduce the need for repeated verbal prompts.

Is ABA therapy the only effective behavioral support for autistic children?

No, multiple approaches can effectively support autistic children's development. Alternatives include DIR/Floortime, Relationship Development Intervention, and sensory integration occupational therapy. Speech therapy focused on functional communication is also valuable. The best approach prioritizes emotional well-being and respects the child's neurology. It builds on strengths and interests, focusing on functional skills rather than conformity. Parents can implement positive behavior support at home through environmental changes and teaching new skills.

How do I create effective visual schedules for my autistic child?

Create visual schedules using pictures, photos, or words to show daily activities. Include both preferred and non-preferred tasks to build accurate expectations. Choose between physical schedules with tactile elements or digital versions for easy changes. Make schedules accessible at eye level and review them together daily. Use them to preview activities and transitions. Include "surprise" or "choice" slots to teach flexibility while maintaining overall structure.

What should I include in a calm-down kit for my autistic child?

Personalize calm-down kits based on your child's sensory needs. Include fidget tools, noise-canceling headphones, and comfort objects. Add stress balls, weighted items, and visual calm-down sequences. Make kits portable for use in various settings. Introduce tools during calm moments so children know how to use them before needing them.

How can I accommodate my child's sensory needs in public settings?

Plan ahead by visiting new places during quiet times. Research sensory aspects of environments and prepare your child with photos or videos. Create portable sensory toolkits with headphones, sunglasses, and comfort items. Schedule breaks in quieter areas before overwhelm occurs. Time outings to avoid peak sensory periods. Communicate openly about plans and develop an exit strategy for overwhelming situations.

What does neurodiversity-affirming parenting mean in practice?

Neurodiversity-affirming parenting recognizes autism as a natural brain variation, not a disorder. It means honoring autistic traits as valid, not problematic. This approach focuses on building skills and providing accommodations rather than forcing conformity. It involves supporting a child's own goals, not pushing neurotypical standards. Celebrate autistic identity and connect children with autistic role models. Prioritize well-being and authentic self-expression over behavioral conformity.

How do I know if my communication style is effective for my autistic child?

Look for improved comprehension and reduced frustration during conversations. Watch for increased communication initiation and better cooperation following instructions. Effective communication uses clear, concrete language and avoids idioms and abstract concepts. Use specific, observable instructions rather than vague directions. Reduce verbal demands during stress and use visual supports. Allow adequate processing time without immediate repetition. Consult speech therapists familiar with autistic communication for personalized guidance.

Should I force my autistic child to participate in social activities?

No, forced social participation often creates negative associations and increases anxiety. Instead, create low-pressure opportunities aligned with your child's interests and comfort level. Respect their social preferences, recognizing that autistic individuals often prefer different interaction patterns. Focus on skills that help your child achieve their own social goals. Gradually expand social experiences based on the child's readiness and interest, not arbitrary timelines.

What's the difference between a sensory meltdown and behavioral defiance?

Sensory meltdowns occur when input exceeds processing capacity, causing neurological overwhelm. They involve loss of control and continue even when demands stop. Meltdowns are involuntary

responses to overload. Behavioral defiance involves deliberate refusal while maintaining control. It typically occurs when the child is regulated and may involve negotiation attempts. However, apparent defiance in autistic children often represents unmet needs or processing difficulties.

How do executive function challenges affect my child's ability to follow directions?

Executive function challenges impact task initiation, focus, memory, impulse control, and transitions. A child may understand expectations yet struggle with the brain processes needed to start or sequence tasks. Non-compliance often stems from genuine difficulty, not disobedience. Effective supports include breaking tasks into steps, using visual sequences, and reducing distractions. Understanding these challenges prevents misinterpreting limitations as laziness.

Can positive parenting approaches work for high-functioning autistic children?

Yes, positive parenting is essential for all autistic children. "High-functioning" kids often face hidden struggles with sensory processing, anxiety, and executive function. They may mask their challenges, leading to burnout and emotional issues. These children benefit from approaches that validate their needs and honor their differences. The same principles apply across the spectrum: presuming competence, prioritizing regulation, and respecting neurological differences.

What role does routine play in positive parenting for autism?

Predictable routines provide structure that reduces cognitive load and anxiety. They make time and expectations concrete, easing constant decision-making. Effective routines balance predictability with flexibility to accommodate sensory needs and changes. Successful routines offer supportive structure rather than rigid constraints. Use visual supports to communicate clearly when changes must occur. This approach provides security while gradually teaching adaptation skills.

How can I repair my relationship with my autistic child after using traditional discipline methods?

Start by acknowledging past approaches that may have been harmful. Communicate openly that you're learning better ways to support them. Show consistent changed behavior over time rather than expecting immediate trust. Prioritize connection without demands and follow their lead in play. Validate their experiences without defensiveness. Recognize that rebuilding trust takes time, especially for kids who've felt misunderstood.

What support do I need as a parent implementing positive autism parenting techniques?

Parents need robust support systems to sustain positive parenting. Connect with other autism parents who understand your challenges. Seek respite care to prevent burnout and therapeutic support for processing emotions. Learn about autism from autistic adults' perspectives. Join support groups and work with neurodiversity-affirming professionals. Remember that self-care is necessary, not selfish, to provide the calm presence your child needs.

How do I balance supporting my autistic child while preparing them for a neurotypical world?

Focus on building skills that help your child achieve their goals, not just appear neurotypical. Teach self-advocacy, effective communication, and problem-solving. Respect that some environments may always need modification. Work to create a more accepting world by educating others and advocating for accommodations. Connect your child with neurodivergent communities where they feel accepted.

When should I seek professional help for my autistic child's behavioral challenges?

Consider professional help when challenges significantly impact safety or well-being despite using positive strategies. Seek support to identify

underlying causes of persistent behaviors or address complex sensory issues. Choose professionals familiar with neurodiversity-affirming approaches. Ensure they respect autism as a valid neurology and prioritize emotional well-being over conformity. Trust your instincts if approaches feel harmful or disrespectful.

What does long-term success look like for autistic children raised with positive parenting approaches?

Success means authentic well-being, self-knowledge, and quality of life, not just behavioral conformity. Successfully parented autistic individuals develop secure attachments and understand their differences. They can identify their needs, use self-regulation strategies, and maintain good mental health. They pursue interests authentically and build relationships aligned with their preferences. Most importantly, they feel fundamentally worthy of love and belonging exactly as they are.



POSITIVE PARENTING

for

AUTISM:

DISCIPLINE WITHOUT MELTDOWNS



Traditional discipline methods often don't work for children with autism — and can even make meltdowns worse. What parents need are compassionate, effective strategies that set boundaries without creating fear or frustration.

This practical guide shows you how to manage behavior with positive parenting techniques that truly work for autistic children, while reducing stress for the whole family.

Inside this book, you'll discover:

- ✓ The difference between meltdowns and tantrums — and how to prevent both
- ✓ How to identify triggers and reduce behavior challenges before they start
- ✓ Gentle discipline methods that replace punishment with teaching
- ✓ Emotional regulation tools that help children calm themselves
- ✓ Positive reinforcement strategies that build confidence and motivation
- ✓ Practical tips for handling behavior challenges in public places
- ✓ Stress-reducing tools for parents to stay calm during tough moments

Written with warmth and clarity, this book empowers parents to guide behavior in a way that builds trust, cooperation, and respect.

👉 **Download today** and learn how to discipline with compassion, not conflict.

